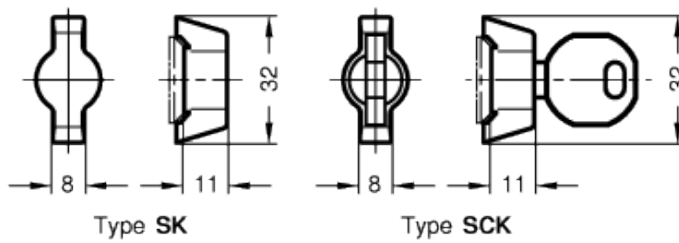
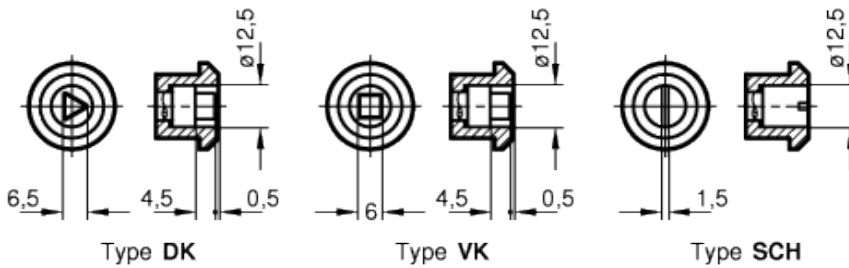
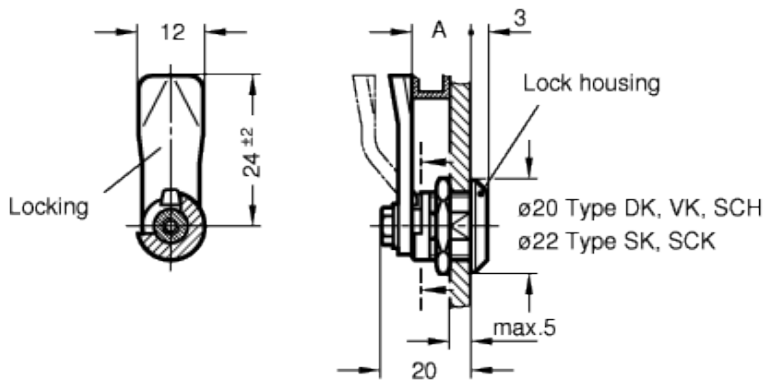


GN 115.1

Mini-Latches



technical informations

Lock housing

Chromium-plated zinc-pressure die cast.

Metal elements

Zinc-plated steel, blue passivated.

Standard versions available

- Type DK: Operation with triangular spindle key.
- Type VK: Operation with square spindle (A/F6).
- Type SCH: Operation with slot.
- Type SK: Operation with polyamide-based (PA) technopolymer wrench.
- Type SCK: Operation with polyamide-based (PA) technopolymer wrench, lockable, with Nickel silver key with plastic handpiece.

Accessories on request

- Key GN 119.2.
- Protective caps GN 120.

Assembly instructions

Mini-Latches GN 115.1 have smaller dimensions than latches GN 115.

They lock by a turning operation limited to 90° which moves the locking behind the door frame. The bevels of the locking ease the closing of the door.

Latches with different cranks allow a latch distance A in the range from 8, 14 and 20 mm.

The lockable latch (Type SCK) is supplied with two keys. The key may be pulled off in both end positions.

In their standard design, the latches have the same lock / the same key.

Mini-Latches GN 115.1 are supplied with loosely enclosed locking.

Features and applications

Mini-Latches GN 115.1 have smaller dimensions than GN 115. They lend themselves ideally for small doors and flaps. In addition they are a low cost product. However they offer a straightforward locking action rather than a locking and clamping action.

The latch distance A of this mini-locks is made to suit 7.5, 13.5 and 19.5 mm.

Construction and assembly instructions

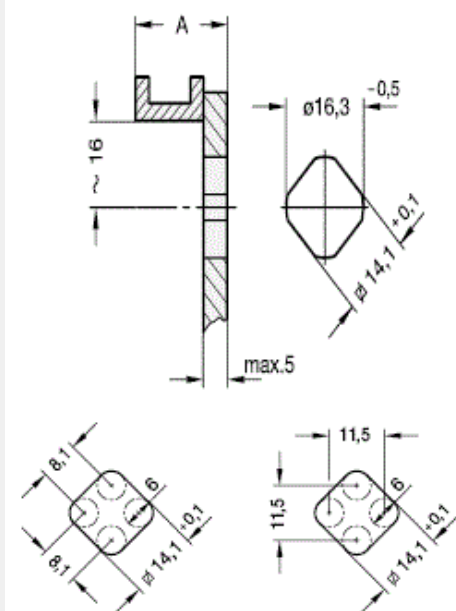
For installation, set a bore diameter in the door as shown in the outline drawing opposite.

Once assembled, the latch is pushed through the bore diameter from the front. The hexagon nut can then be pushed over the latch from the back and bolted in place.

The **installation bore diameter** in the door leaf is usually generated by punching or laser machining in series production.

For small series and steel sheets below 2 mm thickness, the GN 123 sheet metal punches are the tool of choice → page 964.

The installation bore diameter can also be set by drilling / milling as shown in the outline drawings opposite.

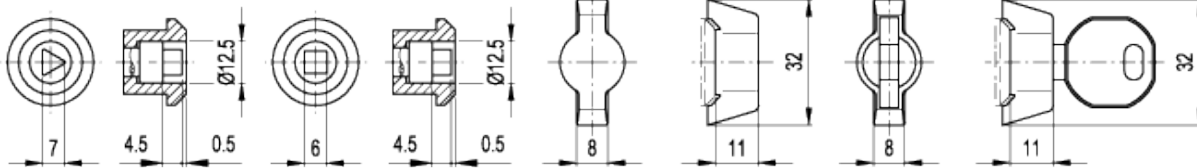


GN 115.1-DK

GN 115.1-VK

GN 115.1-SK

GN 115.1-SCK



Standard Elements	Main dimensions	Weight
Description	A	g
GN 115.1-DK-7.5	7.5	24
GN 115.1-VK-7.5	7.5	25
GN 115.1-SCH-7.5	7.5	20
GN 115.1-SK-7.5	7.5	49
GN 115.1-SCK-7.5	7.5	57
GN 115.1-DK-13.5	13.5	24
GN 115.1-VK-13.5	13.5	25
GN 115.1-SCH-13.5	13.5	20
GN 115.1-SK-13.5	13.5	50
GN 115.1-SCK-13.5	13.5	57
GN 115.1-DK-19.5	19.5	24
GN 115.1-VK-19.5	19.5	25
GN 115.1-SCH-19.5	19.5	20
GN 115.1-SK-19.5	19.5	50
GN 115.1-SCK-19.5	19.5	60



STANDARD MACHINE ELEMENTS WORLDWIDE